



Adjustable

AC/ACR Series Features:

- **AC Storage Shelving** provides an aesthetic alternative to basic "store room" storage shelving with 18 gauge steel shelves accommodates up to 400 lbs. per 15" X 36" shelf.
- **ACR Storage Shelving** is identical to AC Shelving with double reinforced 18 gauge steel shelves that accommodate up to 600 lbs. per 15" X 36" shelf. (Great for storing heavy X-Ray Film, etc.)
- Exceptionally strong 14 gauge cold rolled steel vertical support posts support reinforced no-sag steel shelving fully adjustable on 1" increments.
- Back to back units in any height can be used freestanding.
- Offered in a wide range of standard electrostatically applied powder coat colors or custom color matched to your specification.

Options:

- Tops: Steel, Wood or Laminate
- 22 Gauge Steel Back & Side Panels
- Bin & Shelf Dividers
- Doors
- Available In Custom Widths, Depths And Heights

AC / ACR Storage Shelving fills the gap between our inexpensive N&B Storage Shelving and LR Library Shelving, while providing exceptional load capacity. AC / ACR Storage units embodies a unique aesthetic that provides an economical alternative to LR Shelving. The soft round vertical posts eliminate sharp corners and provide the necessary setback for concealed shelf adjustment slots; offering an acceptable aesthetic that works even in the "front office".

- 18 Gauge Steel Shelf
- 16 Gauge Steel Clip Shelf Support
- 14 Gauge Steel Upright
- Sway Brace



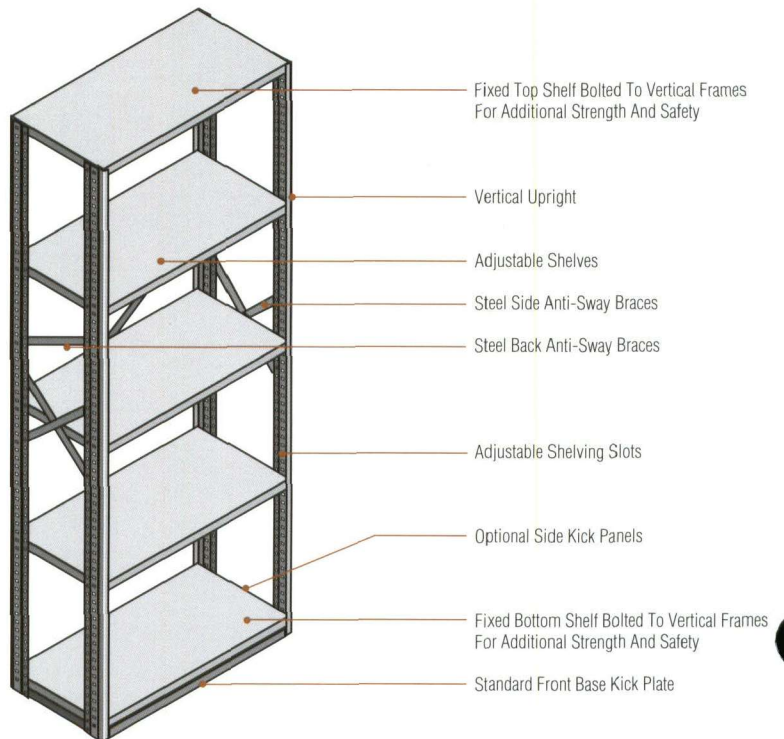
DETAIL: CORNER AND SHELF ASSEMBLY.

AC/ACR Standard Size Availability:

Standard Shelf Depths 12", 15", 18", 24" x Width	30"	36"	42"	48***
Standard Heights*	8'3"	9	9	9
	7'3"	8	8	8
	6'3"	7	7	7
	5'3"	6	6	6
	4'3"	5	5	5
	3'3"	4	4	4
	2'3"	3	3	3

* Heights also available in 1" increments.
 ** ACR Only

Number of Shelves (Including Top)



AC/ACR Installation Instructions

- 1.) Unpack all material to make sure all parts are there.
- 2.) If provided review the plain and elevation drawings to familiarize yourself with the layout. Please note if we have received this information it will be included in the instruction package.
- 3.) If any parts are missing or if you have any questions after reading these instructions, please call 718.784.2105.

How to Install

First look at the uprights there are two different types. One has holes on the small bend, this is the back post. The upright with no holes on the small bend is the front post.

The top and bottom shelves must be bolted in. The top shelf is bolted into the top hole and the bottom shelf is normally bolted into the third hole from the bottom which leaves space for the base plate.

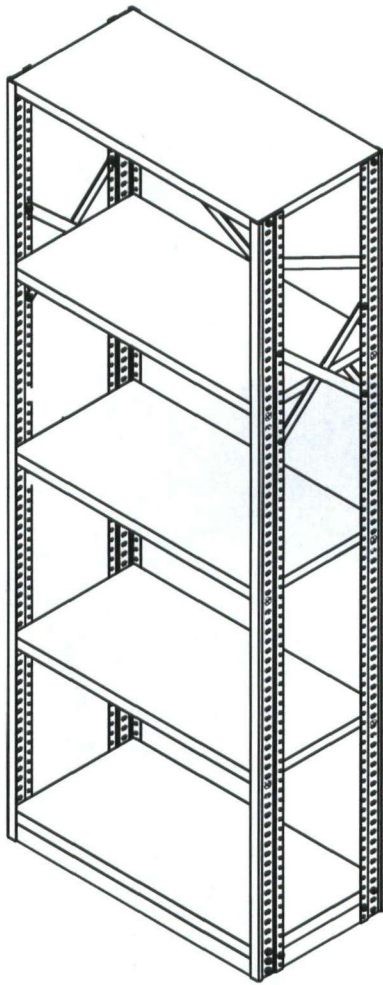
Once you have attached the top shelf, bottom shelf and base you can stand the unit up.

Have some one hold the unit up and at this time layout where the shelves will go and insert the clips accordingly. Now have the person hold the unit square and attach the sway braces. Sway braces should be installed on the inside of the upright with the bolt going through the upright then the sway. Doing this now will make the installation of the shelves easier once the unit is attached to the wall and/or adjoining units. The sways should cross at a shelf and be installed in the top 1/3 of the unit. The sways can remain loose at this time to make it easier to level and plumb them once they are moved into position. *Please Note* that depending on the layout the units share common side and back sways.

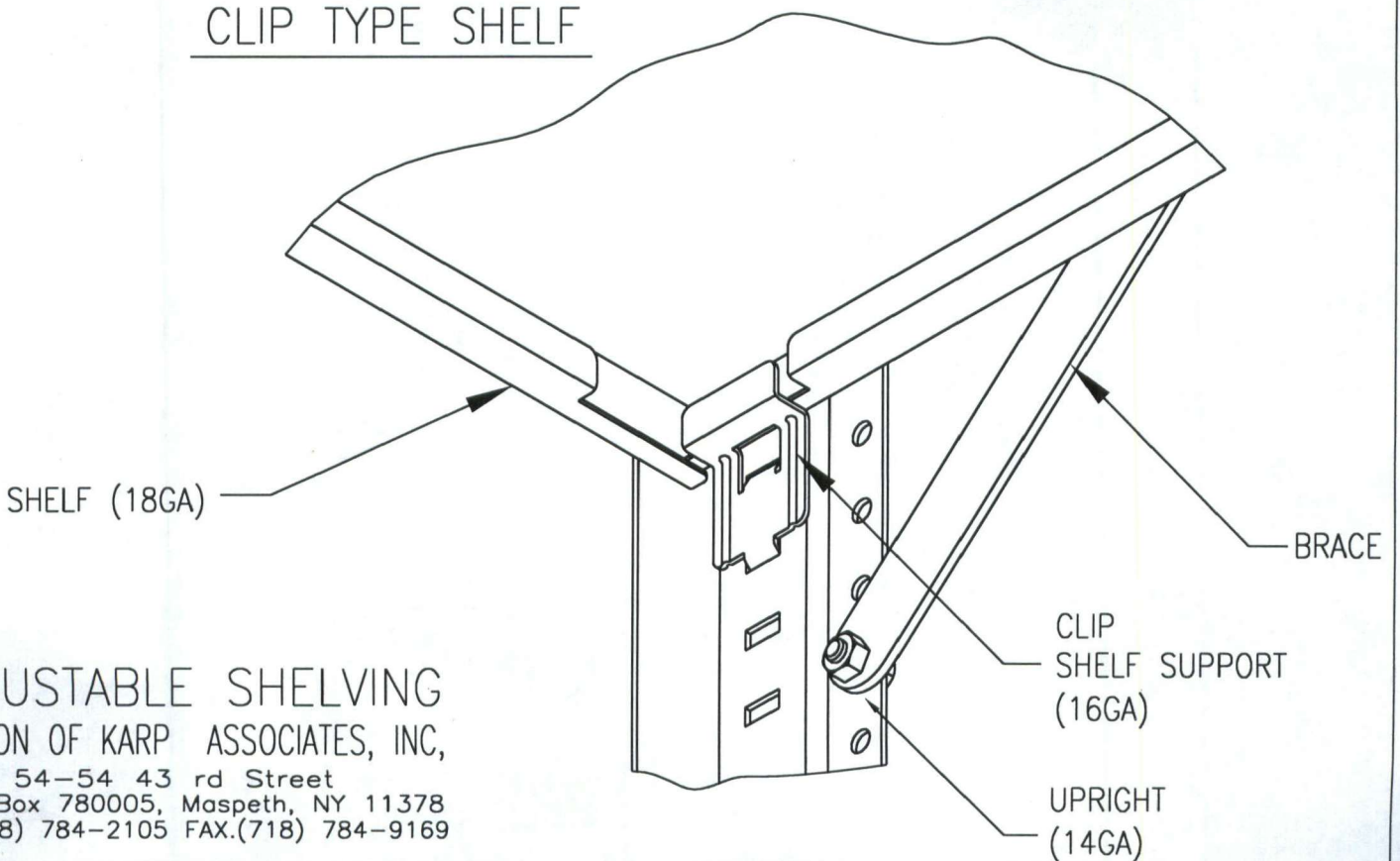
Move the units into position making sure you level and plumb each unit as you install it. Tighten the sways as you go along. Single faced units must be attached to the wall using the appropriate method. Once the unit is set attach it to the wall then attach the next unit to the previous one. When attaching adjoining units it is suggested that you bolted the uprights together in 3 places in the front and back. Use the same method to build and install the remaining units. Back to back units must be bolted together using the holes in the back uprights.

Once the row has been completely installed you can install the remaining intermediate shelves. Be sure to test the shelves to see if they have been seated correctly on to the clips.

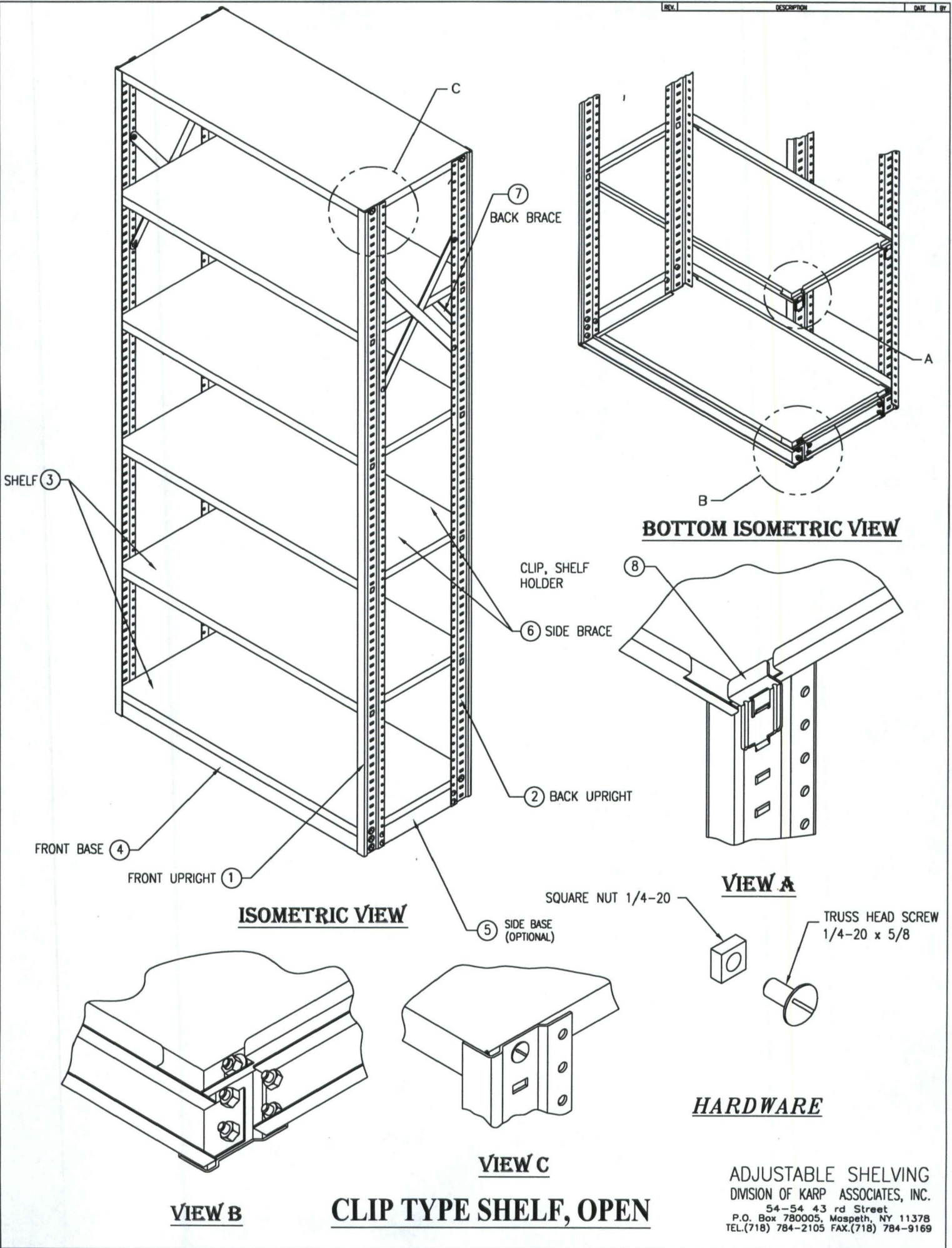
If the unit is a closed type (sides and backs) then install the back when you are first attaching the uprights. The holes in the back will align with the holes in the back upright. Same applies to the sides. Back and sides should be bolted with 3 bolts (top, middle and bottom) on each side.



CLIP TYPE SHELF



ADJUSTABLE SHELVING
DIVISION OF KARP ASSOCIATES, INC,
54-54 43 rd Street
P.O. Box 780005, Maspeth, NY 11378
TEL.(718) 784-2105 FAX.(718) 784-9169



ISOMETRIC VIEW

BOTTOM ISOMETRIC VIEW

VIEW A

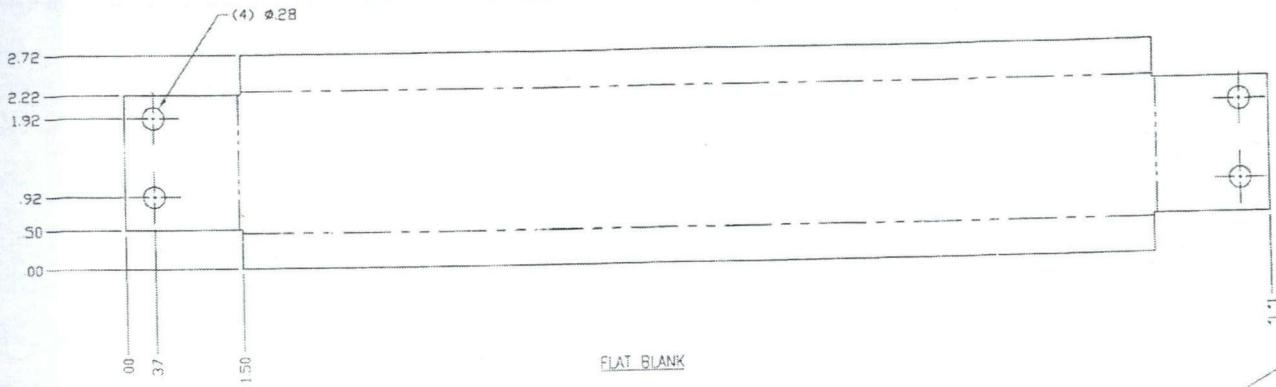
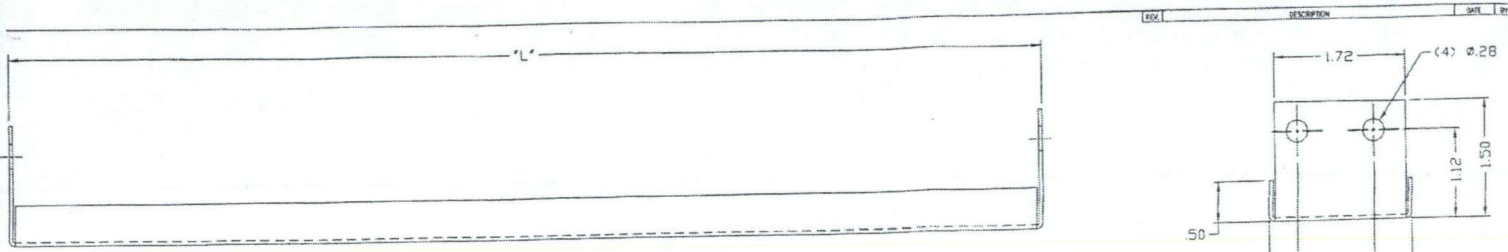
VIEW B

VIEW C

HARDWARE

CLIP TYPE SHELF, OPEN

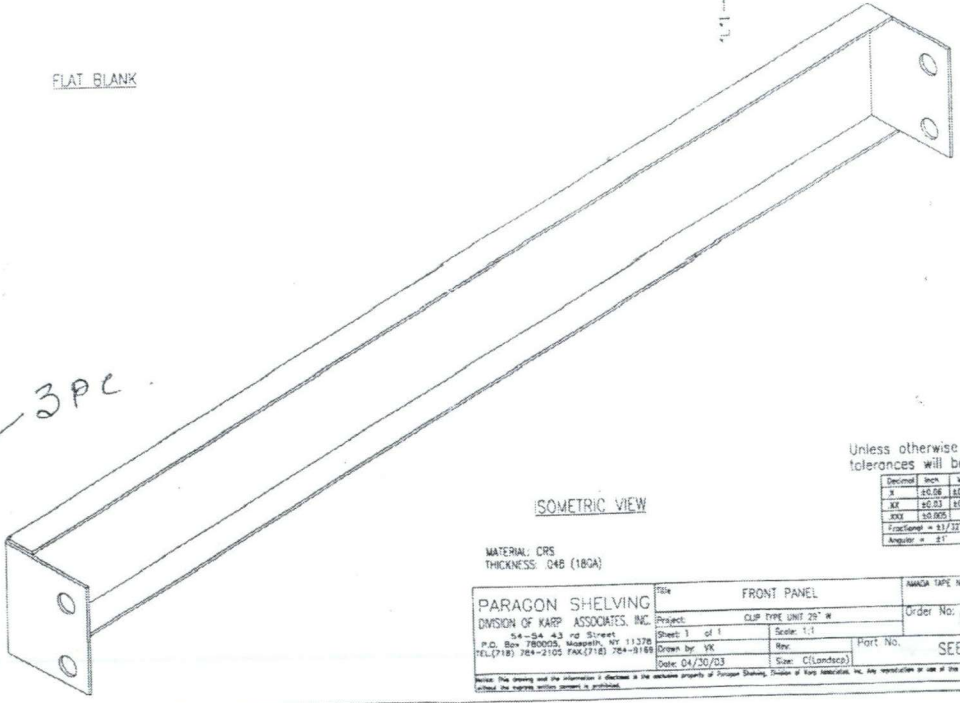
ADJUSTABLE SHELVING
 DIVISION OF KARP ASSOCIATES, INC.
 54-54 43 rd Street
 P.O. Box 780005, Maspeth, NY 11378
 TEL.(718) 784-2105 FAX.(718) 784-9169



FLAT BLANK

2 PC

PART No.	L"	L1"	PART No.	L"	L1"
	28.50"	31.34"		39.50"	42.34"
10094	29.50"	32.34"		40.50"	43.34"
	30.50"	33.34"	10091	41.50"	44.34"
	31.50"	34.34"		42.50"	45.34"
	32.50"	35.34"		43.50"	46.34"
	33.50"	36.34"		44.50"	47.34"
	34.50"	37.34"		45.50"	48.34"
10093	35.50"	38.34"		46.50"	49.34"
	36.50"	39.34"		47.50"	50.34"
	37.50"	40.34"		48.50"	51.34"
	38.50"	41.34"		49.50"	52.34"



ISOMETRIC VIEW

Unless otherwise specified tolerances will be as follows

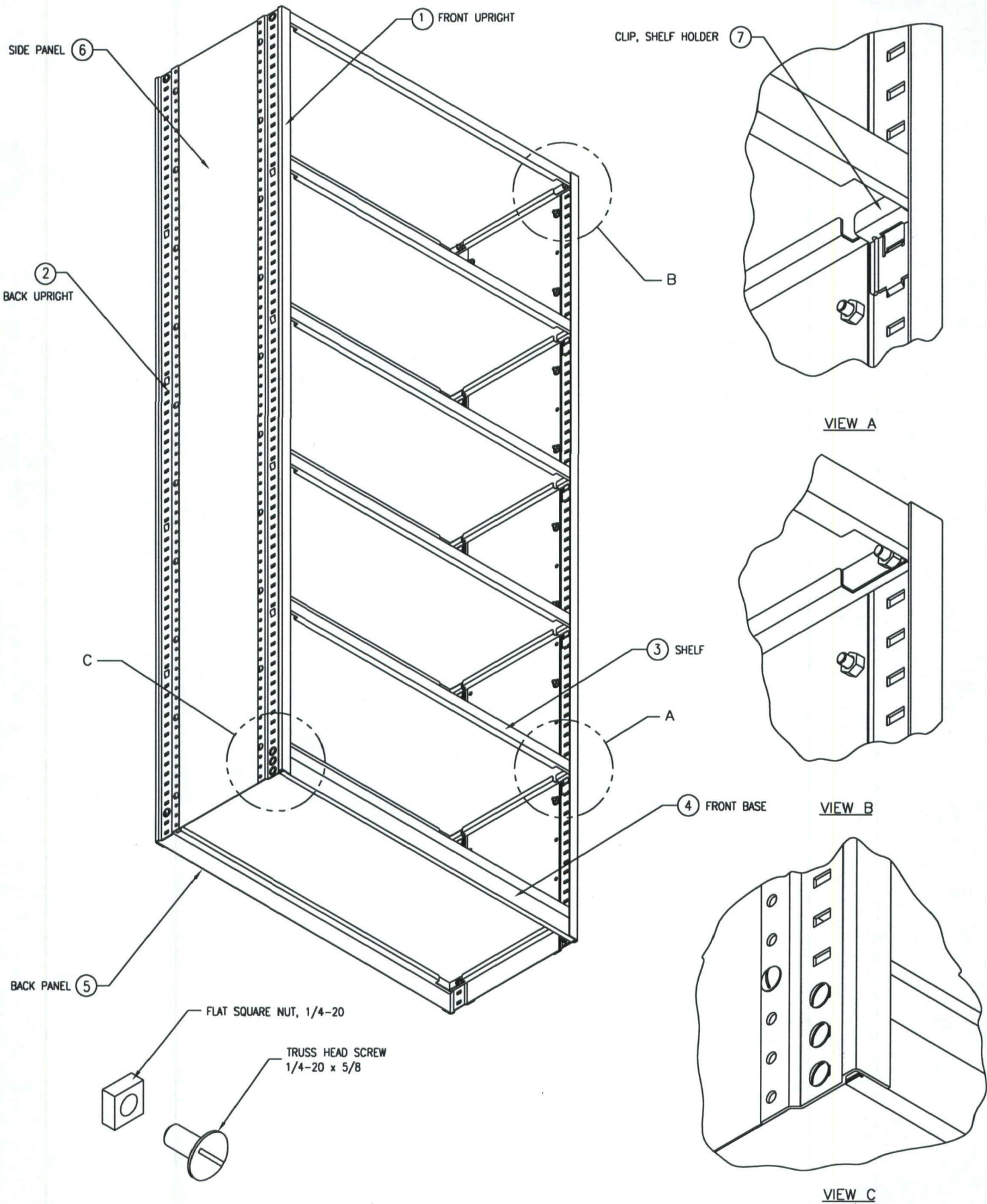
Decimal	Inch	MM
F	±0.06	±0.8
XX	±0.03	±0.25
XXX	±0.005	
Finish	±0.001	
Angle	±1°	

MATERIAL: CRS
THICKNESS: .048 (18GA)

2 PC

PARAGON SHELVING		Title: FRONT PANEL		AMADA TAPE No. CSBP	
DIVISION OF KARP ASSOCIATES, INC.		Project: CLIP TYPE UNIT 29" W		Order No. STANDART	
44-34, 43 rd Street		Sheet: 1 of 1		Scale: 1:1	
P.O. Box 780003, Westport, NY 11776		Drawn by: YK		Rev:	
TEL: (716) 784-2105 FAX: (716) 784-8148		Date: 04/30/03		Part No. SEE CHART	
		Size: C (Landscape)			

Note: This drawing and the information it contains is the exclusive property of Paragon Shelving, Division of Karp Associates, Inc. Any reproduction or use of this drawing is void if not signed and stamped within company's premises.



HARDWARE

CLIP TYPE SHELF, CLOSED, ASS'Y

ADJUSTABLE SHELVING
 DIVISION OF KARP ASSOCIATES, INC.
 54-54 43 rd Street
 P.O. Box 780005, Maspeth, NY 11378
 TEL.(718) 784-2105 FAX.(718) 784-9169

